

**Release Notes for  
DEPAROM Client 5.06.03**



---

**Release Notes - DEPAROM Client 5.06.03**

---

## Contents

<b>1</b>	<b>INTRODUCTION .....</b>	<b>3</b>
1.1	DESCRIPTION .....	3
1.2	AUDIENCE .....	3
1.3	HISTORY .....	3
<b>2</b>	<b>GENERAL.....</b>	<b>4</b>
2.1	COMPATIBILITY TO EARLIER SOFTWARE VERSIONS.....	4
2.2	CHANGES TO THE DVD FORMAT .....	4
2.3	SYSTEM REQUIREMENTS .....	4
<b>3</b>	<b>LIST OF CHANGES .....</b>	<b>5</b>
3.1	EXPORT FACSIMILES IN PDF FORMAT .....	5
3.2	NEW DIALOG FOR KEYWORD SEARCH .....	6
3.3	CHANGES TO THE ACCUMULATIVE INDEX .....	9
3.4	FRONT PAGE DRAWINGS .....	12
3.5	BIBLIOGRAPHIC WINDOW .....	14
3.6	CONTEXT MENU IN THE HITLIST.....	15
3.7	GO TO HITLIST ENTRY.....	15
3.8	CHANGES TO VIEW MENU .....	15
3.9	'STAY ON TOP' FOR DOCUMENT ATTRIBUTE WINDOWS.....	16
3.10	MAXIMISED DOCUMENT VIEW.....	16
3.11	BUILD NUMBER CHECKED ON UPDATES.....	16
3.12	INSTALLER SHOWS BUILD NUMBER .....	16
3.13	FILE OPEN AND SAVE DIALOGS RESIZABLE.....	17
3.14	INSTALLER WRITES NOTICE CONFIGURATION TO DEPAROM.INI.....	17
3.15	STANDARD BATCH SCRIPTS.....	17
3.16	CHANGES TO THE BATCH MODE.....	17

---

## Release Notes - DEPAROM Client 5.06.03

---

### 1 Introduction

#### 1.1 Description

This document describes the changes made to the DEPAROM Client from versions 5.06.02 to 5.06.03.

#### 1.2 Audience

This document is written for end users who want to install and use the new client version 5.06.03. It is also intended for Administrators who need to understand the changes to the configuration and installation.

#### 1.3 History

Version	Date	Author(s)	Comments
1.0	31.03.2008	Michael Rusted	Created from German version
1.0	03.04.2008	Thomas Schäfer	Review
1.1	30.09.2008	Michael Rusted	Updated for Profil release

---

## Release Notes - DEPAROM Client 5.06.03

---

## 2 General

### 2.1 Compatibility to earlier Software Versions

This version of the DEPAROM Client is compatible with previous versions. Please see, however, chapter **2.2 Changes to DVD Format**.

As of version 5.6.00, several changes have been made to the installation of the client that impact the configuration. The DEPA32.INI has been renamed DEPAROM.INI and can now be placed in whatever folder you choose.

If you wish to install the new version using your current configuration, the DEPA32.INI file needs to be renamed DEPAROM.INI ***BEFORE*** beginning the installation. During installation, select "Don't Change" in the configuration dialog box to avoid overwriting the existing configuration.

See Chapter 3 **Installing DEPAROM** in the DEPAROM Handbook for more information (available online at <http://www.deparom.de/> or on your DEPAROM CD/DVD).

### 2.2 Changes to the DVD Format

The format of the DVD will change. The content of the DVD has been extended to include:

1. Front page drawings in TIFF format
2. Full text PDF documents
3. Bibliography and full text in XML format

To facilitate these changes, the EXCHANGE.IDX file has been modified.

Future DVDs can *not* be read using older versions of the client!

### 2.3 System Requirements

Version 5.06.03 requires Windows 2000, Windows XP, or Windows Vista operating systems.

In order to use the **Notice Plus module** added in Version 5.06.01, the .NET Library version 2 is necessary. The .NET library is also required to download the Legal Status data from OPS (new to this version) since it utilizes the Notice Plus module.

The installation of .NET is not required if you wish to continue using the notice module from previous versions (before 5.06.01). However, this means that you will not be able to use the Legal Status data from OPS. Please see chapter **11.2 Notice Module Plus** in the DEPAROM Handbook for more information about Notice Module Plus.

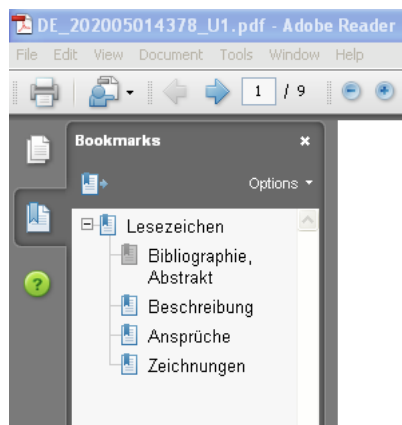
The installation program for .NET can be downloaded from the Microsoft web-site at [www.microsoft.com/downloads](http://www.microsoft.com/downloads) or as of 1.1.2008 from your DEPAROM-DVD under the folder **soft32\dotnetfx.exe**.

### 3 List of Changes

#### 3.1 Export Facsimiles in PDF Format

With this version, facsimiles can also be exported in PDF format. Documents can be exported using the 'Download' dialog in the client. This dialog now supports PDF as an export format.

PDF files exported with this function are created with bookmarks to improve navigation.



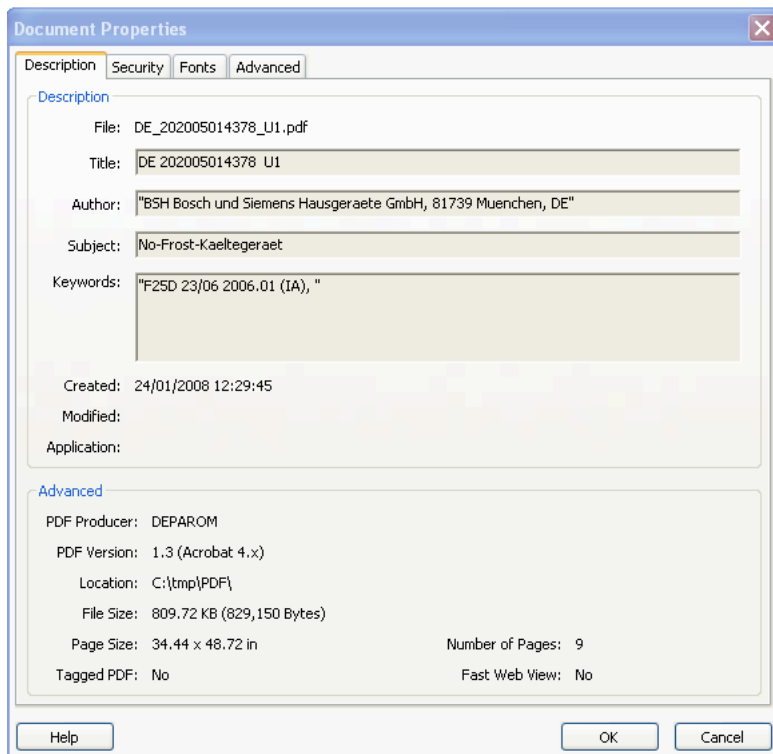
**Diagram 1- Bookmarks in Adobe Acrobat Reader**

Bibliographic data is included in the Meta information of each document exported. See the table below for more information.

Bibliographic Data	PDF Meta Data
Document number (PN)	Title
Title (GT)	Subject
Patent Applicant (PA)	Author
IPC Classes (MC und ICA)	Keywords
Programm name (DEPAROM)	Producer

This data can be read using tools such as Adobe Acrobat Reader.

## Release Notes - DEPAROM Client 5.06.03



**Diagram 2 – Viewing document properties using Adobe Acrobat Reader**

PDF files can also be created in batch mode. To do this, use the format character 'p' for PDF.

Example:

```
Download
  DataType = f
  Source = h
  SourceFile = c:\tmp\hitlist.rst
  Format = p
  Target = c:\tmp\pdf.log
End
```

### 3.2 New Dialog for Keyword Search

A new dialog 'Keyword Search' has been created as an alternative to the existing search dialogs 'Supported Mode', 'Expert Mode' and 'Accumulated Index'.

You can open this dialog by selecting 'Keyword Search' from the menu 'Search | Keyword Search', using the toolbar button 'S' or using the keyboard combination 'Shift – F6':

## Release Notes - DEPAROM Client 5.06.03

**Stichwort Suche**

AB: Abstrakt, AM: Anmerkung, CL: Ansprüche, F1: Freier Text, GT: Titel, TX: Volltextsuche Anpassen

1. WASSERKRAFT,SYSTEM ...

AM: Anmerkung, F1: Freier Text Anpassen

2. ...

IN: Erfinder, PA: Anmelder, RN: Vertreter Anpassen

3. SIEMENS ...

IC: Alle Klassen, ICA: Nebenklasse, MC: Hauptklasse Anpassen

4. G06T 7/4\*,G0,H ...

KI: Dokumentart

5. A1 ...

Anmeldedatum  Publikationsdatum

6. Bis Datum ▼ 27.01.2008 ▼

Trefferliste: Gehe zu: 5 Treffer

DEA2007028DE	102005051091	A1	20070426	[14]	Siemens AG, 80333 Muenchen, DE
DEA2007028DE	102005051101	A1	20070426	[15]	Siemens AG, 80333 Muenchen, DE
DEA2007028DE	102006002693	A1	20070426	[14]	Siemens AG, 80333 Muenchen, DE
DEA2007028DE	102006043347	A1	20070426	[12]	Siemens Medical Solutions USA, Inc.,
DEA2007028DE	102006043348	A1	20070426	[13]	Siemens Medical Solutions USA, Inc.,

Suche starten Alle Dokumente Treffer anzeigen

The query is built by combining input in the search fields one to six (see diagram above). In each search field, search items are separated by commas.

A document that has at least *one* hit for *any* search item in *every* field will be added to the hitlist. This means that search items within a search field are combined using the 'or'; the search fields themselves are combined using 'and'.

### Text Search Fields

The first two search fields are used for the text fields: abstract, title, comments, claims, free text, title or full text. Search items entered here will match *any* of these fields.

### Search Fields for Names

The third search field is used to search for names. Search items entered here can be in the inventor, applicant or agent fields.

### Classification Search Fields

The fourth field is used to search the classification fields: master class, auxiliary classes or national classification (US documents only).

### Search Fields for Document Kind

The fifth field can be used to restrict the search to certain kinds of document.

## Release Notes - DEPAROM Client 5.06.03

The first character must be a valid document kind prefix, the second is optional. If the second character is left off, all documents of this kind (i.e. A1, A3, A5, A9, etc.) match.

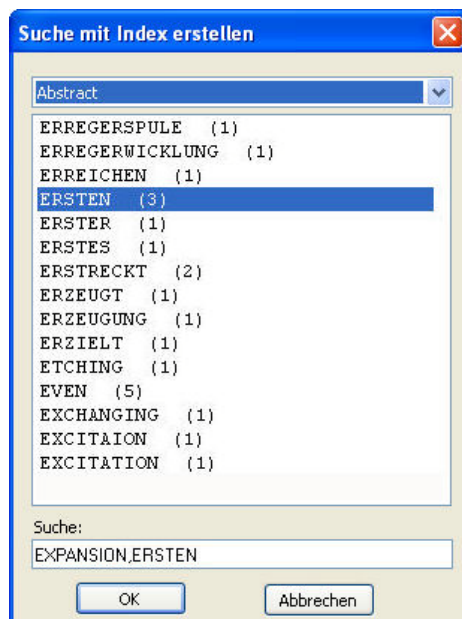
### Restricting the Search by Date

The search can also be restricted by date in field six, either by application or publication date. Application Date searches the fields AD (Application date) and OT (Date of first publication). Publication Date searches the fields DP (Date of Publication) and PR (Bekanntmachungstag).

You can search either: on a given date, between two dates, earlier then or later than a given date. You can also choose to not restrict your search by date. In this case the input fields are hidden.

### Index Lookup

Next to each search field, there is a button marked '...'. This button is used to open a dialog to look up search items in the index. When clicked, the following dialog is opened:



Use the drop-down list to select which index to use. Only those indices are shown that match the search field used. Index entries are shown in the list-box below. A double-click adds the selected index entry to the search item list at the bottom of the dialog.

Click on 'OK' to close the dialog. The search items in the list will be added to the search field from which the dialog was called.

### Other GUI Elements

- 'Start Search' starts the query and displays the resulting hitlist.
- 'All Documents' shows a list of all documents available
- 'Show Documents' opens the list of selected documents. If no documents are selected, opens all. You can then step through the list one document at a time.

## Release Notes - DEPAROM Client 5.06.03

### 3.3 Changes to the Accumulative Index

The following changes have been made to the dialog 'Accumulative Index':

1. New search options: ignore leading zeros on document numbers and find partial matches
2. A new button 'Next' to find further matches
3. A new feature to search the accumulative index using a document number list.

#### 3.3.1 Search Options

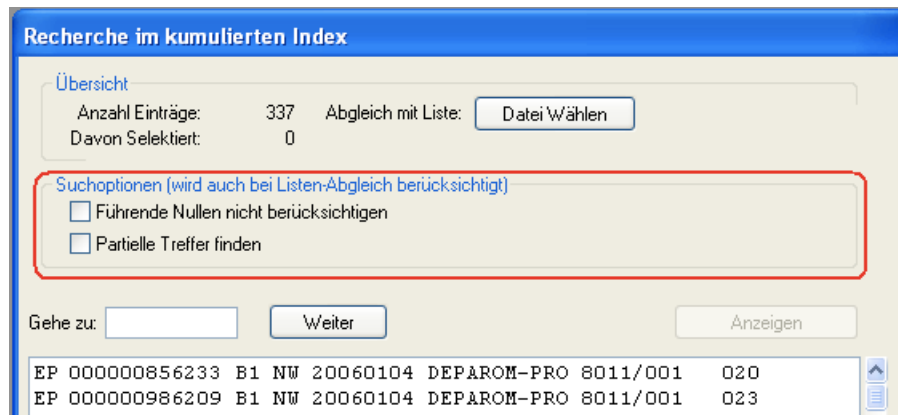


Diagram 3 – Search options in the Accumulative Index

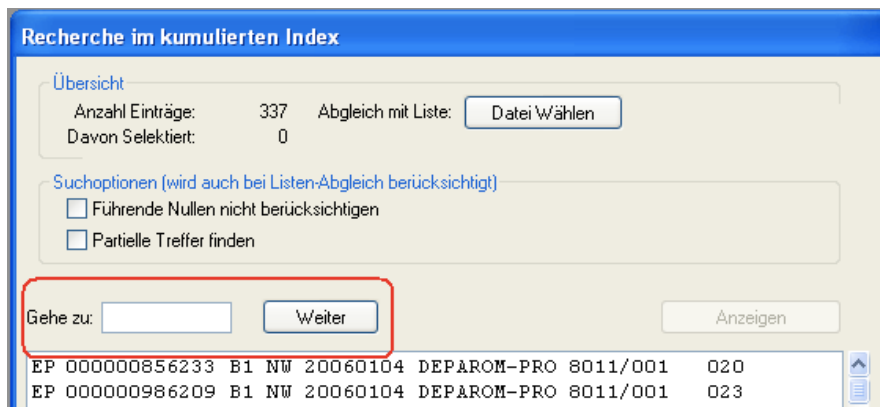
There are two search options that influence the 'Go to' functionality:

1. **Ignore Leading Zeros**  
If this checkbox is selected, leading zeros on document numbers can be left off. For example, when searching for the document with the number '000000856233', only '856233' need be entered to match.
2. **Find Partial Matches**  
Select this checkbox to find parts of document numbers. For example, only the last digits of a document number need be entered to match. Entering '6233' also matches the document '000000856233'. This function is useful when searching for WO documents on a DEPAROM Profil DVD.

#### 3.3.2 'Next' Button

Click on this button to go to the next matching document in the accumulative index. This feature is particularly useful when searching for partial document numbers.

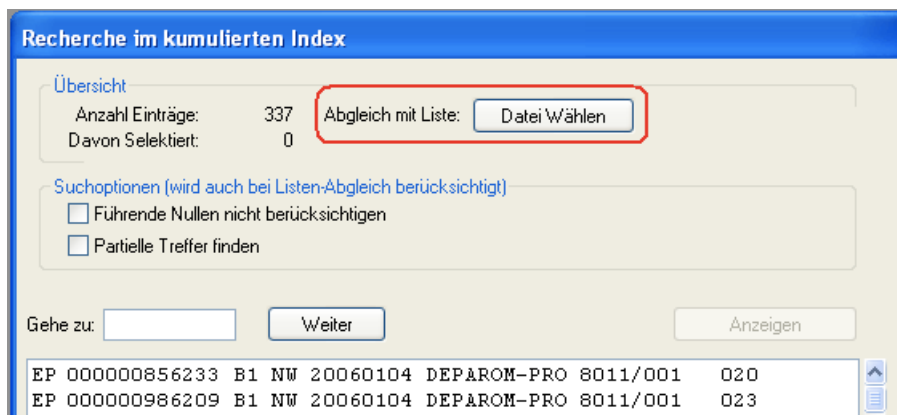
## Release Notes - DEPAROM Client 5.06.03



**Diagram 4 – Go To, with the new ‘Next’ button**

### 3.3.3 Comparing Accumulative Index with Document Number Lists

This feature allows users to verify whether they have certain documents in the database.



**Diagram 6 – New Feature: Compare to List**

To use this feature, a list of document numbers must be created. This list comprises: the Publication Office (PC), the document number (DE) and, optionally, the Document Kind (KI) on a separate line for each document. The fields must be separated by tabs.

Example:

```

DE 000001033897 A1
DE 000060029870
DE 000003122851 A1
DE 000003731250 C1
DE 000003832013 C2
DE 000010102604 A1
DE 000010108771 A1
DE 000010129362 A1
DE 000003785203 T
DE 000010297543 T5
DE 000019621729 B4
DE 000019900310 B4
DE 000020208788 U1
DE 000029622144 U1

```

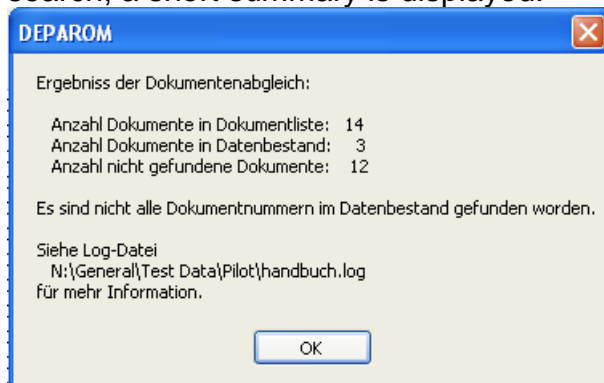
## Release Notes - DEPAROM Client 5.06.03

Note that the second line in the list above the document kind is missing. This line will match publication office and number only, matching any kind. The document kind can also be truncated as in line nine above. In this example any 'T' document matches the query.

If the checkbox 'Ignore Leading Zeros' is selected, leading zeros can be left off in the document number list, too. The same applies to 'Find Partial Matches'.

### Workflow

1. Click on the button 'Select File' to open an existing document number list.
2. The document numbers are searched in the accumulative index. After this search, a short summary is displayed:



3. A more detailed report is written to a log file. This file is written to the same directory and filename from which the document number list was taken and has the extension '.log'. The log file can be opened in any text editor, such as Notepad.

### Log File Description

For each document in the document number list, at least one log entry is written. In some cases more than one log entry is written. This happens when more than one document matches the document number if, for example, the document kind was not given. In the example document number list above the document 'DE 000060029870' matches twice, as can be seen in the log file:

```
DE 000001033897 A1 -> Not found!
DE 000060029870 -> DET2007009 DE 000060029870 T2
DE 000060029870 -> DET2007032 DE 000060029870 T8
DE 000003122851 A1 -> Not found!
DE 000003731250 C1 -> Not found!
DE 000003832013 C2 -> Not found!
DE 000010102604 A1 -> Not found!
DE 000010108771 A1 -> Not found!
DE 000010129362 A1 -> Not found!
DE 000003785203 T -> DET2006086 DE 000003785203 T3
DE 000010297543 T5 -> Not found!
DE 000019621729 B4 -> Not found!
DE 000019900310 B4 -> Not found!
DE 000020208788 U1 -> Not found!
DE 000029622144 U1 -> Not found!
```

## Release Notes - DEPAROM Client 5.06.03

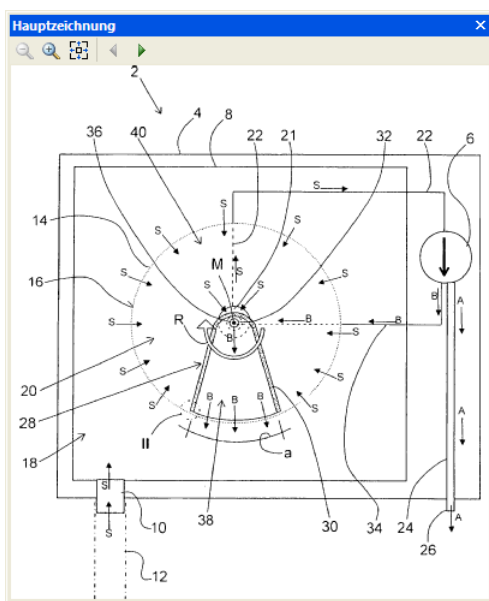
A log entry is written for each document found, with the volume name, the publication office, the document number and the document kind found. Missing documents are marked 'Not found!'.

### 3.4 Front Page Drawings


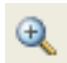



The DEPAROM DVD now also contains the front page drawing for each document along with the embedded images in TIFF format.

The front page drawing is displayed in the window 'Main Drawing'.

This window behaves much the same as the bibliographic data and legal status windows in that it can be moved and docked to the main window. It always shows the title page drawing of the currently selected document in the hitlist.



Using the tool bar in this window, users can navigate between the front page drawing and other drawings:

-  Zoom out to see more of the drawing
-  Zoom in to see part of the drawing in more detail
-  Set zoom level to show whole drawing
-  Navigate between drawings: go backwards in list
-  Navigate between drawings: go forwards in list

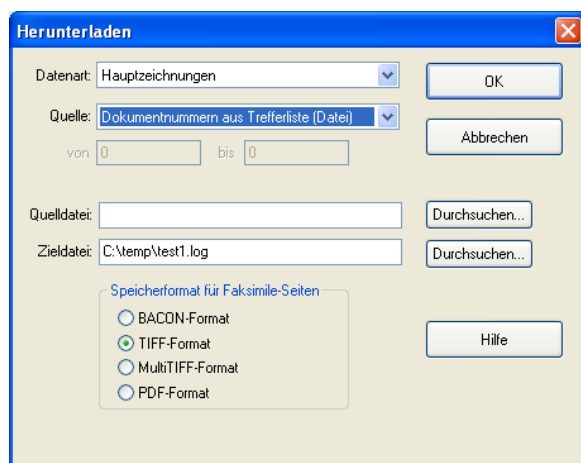
It's also possible to use the mouse-wheel to zoom and use the scroll bars to display different parts of the image.

If a document does not have a title page drawing, an empty window is displayed.



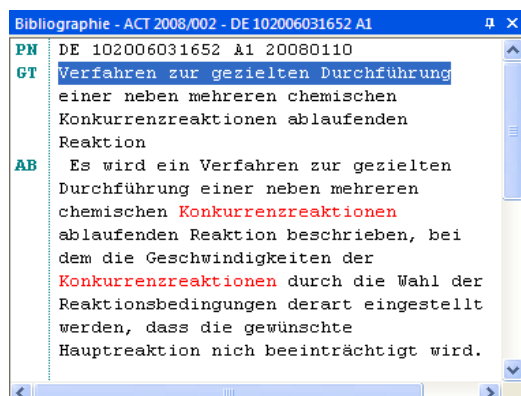
## Release Notes - DEPAROM Client 5.06.03

The front page drawing can also be exported using the Download function of DEPAROM:



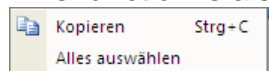
### 3.5 Bibliographic Window

The bibliographic window has been update:



It is possible to mark text portions and copy them to the Windows clipboard using Ctrl-C.

This function is also available through the context menu:



Matching search items are displayed in red text, as opposed to the inverse display in the previous bibliographic window.

It is possible to define which bibliographic fields are displayed and in what order. The above display was created, for example, using the following DEPAROM.INI entry:

```
[BibData]
ShowFields=PN,GT,AB
```

The following data fields are available:

The size of the font used in the bibliographic window can also be set to large in the DEPAROM.INI:

```
[BibData]
LargeFont=1
```

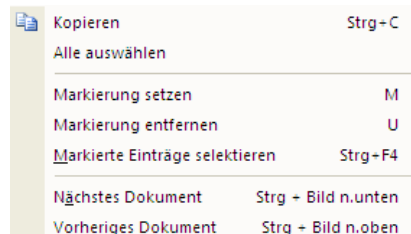
## Release Notes - DEPAROM Client 5.06.03

To use the 'old' version, use the following entry in the DEPAROM.INI:

```
[BibData]
UseOldBibWnd=0
```

### 3.6 Context Menu in the Hitlist

A context menu has been added to the hitlist:



Using **Copy** selected lines are copied to the clipboard from where they can be pasted to other applications:

```
DEA2008002 DE 102006031801 A1 20080110 [15] aap Implantate AG, 12099 Berlin, DE
DEA2008002 DE 102006034656 B3 20080110 [5] AB SKF, Goeteborg/Gothenburg, SE
DEA2008002 DE 102006030950 A1 20080110 [7] AB SKF, Goeteborg/Gothenburg, SE
DEA2008002 DE 102006030952 A1 20080110 [12] ABB Patent GmbH, 68526 Ladenburg, DE
DEA2008002 DE 102005049292 B4 20080110 [8] ABB Patent GmbH, 68526 Ladenburg, DE
DEA2008002 DE 000019912125 B4 20080110 [6] ABB Patent GmbH, 68526 Ladenburg, DE
DEA2008002 DE 102006031652 A1 20080110 [8] Acclavis Process LLC., Brookline, Mass., US
DEA2008002 DE 102006031172 A1 20080110 [6] ADCURAM Maschin GmbH, 80333 Muenchen, DE
```

The context menu can be used to select, mark and navigate between selected documents in the hitlist:

```
DEA2008002 DE 102006031801 A1 20080110 [15] aap
DEA2008002 DE 102006034656 B3 20080110 [5] AB
DEA2008002 DE 102006030950 A1 20080110 [7] AB
DEA2008002 DE 102006030952 A1 20080110 [12] ABB
DEA2008002 DE 102005049292 B4 20080110 [8] ABB
```

The current document is indicated by the yellow markings. The bibliographic data, the main drawing and the legal status windows are updated accordingly. This allows users to browse through a selection of documents without opening the facsimile pages.

### 3.7 Go To Hitlist Entry

In all the search dialogs it is possible to use the 'go to' feature, previously only available when displaying index entries, in the normal hitlist to jump to matching documents.

When typing into the 'go to' field, the selection jumps to the first document to match the data being input.

Matching depends on how the hitlist has been sorted. The first column selected for sorting is used when comparing.

The selection moves as more characters are input. If the input string doesn't match any documents no further input will be accepted.

### 3.8 Changes to View Menu

## Release Notes - DEPAROM Client 5.06.03



New menu points have been added to quickly hide or display the dockable windows (bibliographic data, main drawing and legal status). New keyboard shortcuts are also available: Ctrl-4, bibliographic data, Ctrl-5, legal status and Ctrl-6 for main drawing. The F4 key now shows or hides all the dockable windows at once.

### 3.9 'Stay on Top' for Document Attribute Windows

Floated document attribute windows (bibliographic, main drawing and legal status windows) now have a new menu entry 'Stay on Top' in their context menus in menu bar. When this entry is selected, these windows will always stay on top of all other windows.

This state is stored in the DEPAROM.INI (default = 0):

```
[BibData]           [LegalStatusBar]   [EMIBar]
TopMost=1           TopMost=1           TopMost=1
```

### 3.10 Maximised Document View

The maximised state of the facsimile view windows is now stored in the DEPAROM.INI on exit:

```
[View1]           [View2]
WindowState=1     WindowState=1     mit 1=Normal 3= Maximiert
```

### 3.11 Build Number Checked on Updates

When checking for updates on the DVD, DEPAROM now uses the build number.

### 3.12 Installer Shows Build Number

When installing new versions, the DEPAROM installer now shows the build number after the version number. The build number is used to distinguish between different releases of the same version (such as a bugfix).

---

## Release Notes - DEPAROM Client 5.06.03

---

### 3.13 File Open and Save Dialogs Resizable

The standard Windows file open and save dialogs used in DEPAROM are now resizable with the mouse.

### 3.14 Installer writes Notice Configuration to DEPAROM.INI

The installer now creates a default configuration in the DEPAROM.INI for the notice module. The following entries are written:

```
[notice]
EditCount=3
Title1 = Klassifikation
Title2 = Notizen/Begründung
Title3 = Letzte Aktion
NoOfFields = 4
NameF1 = Wichtig
NameF2 = Archivieren
NameF3 = Einspruch
NameF4 = Gelesen
```

This sets up the Client to use three edit fields (Klassifikation, Notizen/Begründung and Letzte Aktion) and four check buttons (Wichtig, Archivieren, Einspruch and Gelesen). These fields correspond to the standard batch scripts also installed (see below).

### 3.15 Standard Batch Scripts

The installer copies three batch files: SetEinspruch.txt, SetNichtwichtig.txt and SetWichtig.txt into the batch directory if these files do not already exist. The batch directory is directly below the installation directory. Once installed, these batches are available over the menu entries under the Tools menu.

For Changes to the Batch Mode below for more information about these batches and what they do.

### 3.16 Changes to the Batch Mode

In this version the batch mode has been extended to make the client more adaptable to internal workflows such as automated document processing and distribution.

The list summarises the changes made:

- Parameters  
It is now possible to define parameters in a batch file. Parameters have a name and a value. Using the name, the value can be referenced later within the same batch file. Parameters can be defined in such a way that the user must provide the value when the batch file is started, to provide the name of a query file, for example.
- Annotations  
It is now possible to set annotations (notices) using a batch file. Text can be set and/or checkboxes set and/or unset.

---

## Release Notes - DEPAROM Client 5.06.03

---

- **Save Current Hitlist**  
It is now possible to save the current hitlist. The whole hitlist, marked entries or selected entries can be saved to file for later processing. The current hitlist can therefore be used as input for other commands, such as facsimile download or printing.
- **Integration of VBScript**  
It is now possible to call Visual Basic Scripts directly from a batch file. Such scripts can be used to implement more advanced functionality such as sending E.Mails or to perform OCR on exported PDF files. It is also possible to use the results of VBScript functions within the batch file.
- **Extension of the Tools menu**  
Batch files can be called directly from the tools menu. To do this, the batch file must be in the correct directory and also contain a menu title. The batch is then accessible from the menu under this name. The correct directory can be defined in the DEPAROM.INI. The default is 'Batch' within the installation directory.

### 3.16.1 Example Batch Files on the DVD

During the installation of DEPAROM 5.6.3, example batch files are copied to the directory 'Batch\_redist' within the installation directory. These batch files demonstrate some of the new features implemented. The following chapters look at these batch files in more detail.

To allow the batch files to work correctly, they must first be adapted to the environment in which they are to be used.

The batch files can be called directly from the Batch\_redist directory using the menu point 'Search->Batch File'. To allow the batch files to appear in the tools menu they must first be copied into the sub-directory 'Batch' in the installation directory.

Please note: the comments in the batch files are in German.

#### Example 1: Setting two check fields – SetWichtig.txt

Using the batch file **SetWichtig.txt**, an annotation is made in the current document to indicate that this document is important (Wichtig). The two check buttons **Wichtig** (Important) and **Gelesen** (Read) are set.

```
#
# DEMO Batch
#
# Diese Batch-Datei setzt eine Anmerkungen in
# den 'Current Dokument'
#
GermanTitle = Als wichtig markieren;w
EnglishTitle = Mark as important;i
```

Title in Tools menu (Mark as Important). Also available over the keyboard in facsimile mode (i).

---

## Release Notes - DEPAROM Client 5.06.03

---

<pre># Anmerkung für jetziges Dokument erstellen: Anmerkung   Notiz=%%CDATE%% Wichtig durch: %%USERNAME%%   TextFeld=Letzte Aktion   AnkreuzfeldSetzen=Wichtig,Gelesen Ende  # # Zum nächsten Dokument springen: Next</pre>	<p>Annotate the current document.</p> <p>The check fields <b>Wichtig</b> and <b>Gelesen</b> are set. This action is protocolled in the text field <b>Letzte Aktion</b> (Last Action) with date and username.</p> <p>Jump to the next document in the current hitlist.</p>
---	---

### Example 2: Uncheck a check field – SetNichtwichtig.txt

The batch file SetNichtWichtig.txt can be used to mark a document as unimportant, or rather as read but not important. The check field **Wichtig** (Important) is unset and the check field **Gelesen** (Read) is set.

<pre># # DEMO Batch # # Diese Batch-Datei setzt eine Anmerkungen in # den 'Current Dokument' # GermanTitle = Als nicht wichtig markieren;n EnglishTitle = Mark as not important;n  # Anmerkung für jetziges Dokument erstellen: Anmerkung   Notiz=%%CDATE%% Nicht wichtig durch: %%USERNAME%%   TextFeld=Letzte Aktion   AnkreuzfeldLoeschen=Wichtig   AnkreuzfeldSetzen=Gelesen Ende  # # Zum nächsten Dokument springen: Next</pre>	<p>Define menu entry in Tools menu. Also available over the keyboard in facsimile mode (key n).</p> <p>Annotate the current document.</p> <p>The checkfield <b>Wichtig</b> (Important) is unset and the checkfield <b>Gelesen</b> (Read) is set. This action is protocolled in the text field <b>Letzte Aktion</b> (Last Action) with date and username.</p> <p>Jump to the next document in the current hitlist.</p>
---	---

### Example 3: Annotate a Document – SetEinspruch.txt

The batch file SetEinspruch.txt can be used to mark as document as objected (Einspruch). The checkfields **Einspruch** (Objection) and **Gelesen** (read) are both set.

<pre># # DEMO Batch # # Diese Batch-Datei setzt eine Anmerkungen in # den 'Current Dokument' # GermanTitle = Einspruch;e</pre>	<p>Define menu entry in Tools menu.</p>
--	---

## Release Notes - DEPAROM Client 5.06.03

---

EnglishTitle = Object;o	Also available over the keyboard in facsimile mode (key o).
# # Parameterblock: # # Benutzer nach einen Kommentar fragen: Parameter Name=Begrundung Prompt=Bitte Einspruch begründen Typ=Text Ende	Prompt user for a short text describing reason for objection. This text is stored in the parameter <b>Begrundung</b> and is referenced later using this name.
# # Anmerkung für jetziges Dokument erstellen: Anmerkung Notiz=%%CDATE%% Einspruch durch: %%USERNAME%% TextFeld=Letzte Aktion AnkreuzfeldSetzen=Einspruch,Gelesen Ende	The checkfields <b>Einspruch</b> (Objection) and <b>Gelesen</b> (Read) are set. This action is protocolled in the text field <b>Letzte Aktion</b> (Last Action) with date and username.
# # Anmerkung Notiz=%%CDATE%% Begrundung durch: %%USERNAME%% %%Begrundung%% TextFeld=Notizen/Begründung Modus=Anhaengen Ende	The annotation is extended by appending the text in the parameter <b>Begrundung</b> defined above to the text field <b>Notizen/Begrunden</b> (Notes/Reason).
# # Zum nächsten Dokument springen: Next	Jump to the next document in the current hitlist.

## Release Notes - DEPAROM Client 5.06.03

---

Herausgeber

Deutsches  
Patent- und Markenamt



Software, Herstellung und Vertrieb



Bundesdruckerei GmbH  
Oranienstraße 91 · 10958 Berlin  
Hotline  
Service +49 (030) 25 98 – 13 07  
Telefax +49 (030) 25 98 – 13 06  
e-mail: [infovertrieb15@bdr.de](mailto:infovertrieb15@bdr.de)